

# ARCOS<sup>®</sup>

## Universal Studio Office

Unique design with  
in-built system versatility



## A fitting harmony for ideas in glass

Wherever glazing and its hardware need to merge into a single entity, our ARCOS product line offers the ideal transition.

Offering gentle lines with a flowing design, this range of fixings, fittings and furniture provides the perfect blend between the two primary materials. Metal and glass appear to combine seamlessly – with the arc-like curvature of the ARCOS range characterising all the hardware in the programme. Inside and out. With its extensive experience in the materials involved and the associated manufacturing techniques, DORMA has all the production capabilities required to apply this sophisticated capping

geometry. And the ARCOS system has already been singled out for the red dot award 2001 conferred by Design Zentrum NRW in Germany.

With the corresponding fittings from DORMA-Glas, it is possible to create in this style all the standard types of toughened glass assemblies and interior glass doors. Single and double doors can be readily fabricated using this system, and matched with glass side panels and overpanels for that integral look. Lock-handle combinations ensure maximum convenience and security. The ARCOS design offers integration on internal door lock fittings of both lever handles for followers

and lever handles with roses. The roses are flush with the capping for perfect streamlining. Door rails for heavy or high-usage doors complement the portfolio.

All the fittings are of modular design and essentially comprise the basic units, functional inserts and clip-on covers in a variety of surface finishes. The requisite glass apertures and drilled holes correspond to the standard requirements and can thus be provided quickly and without problem.

High-quality materials and excellent workmanship ensure a long service lifetime combined with a truly attractive appearance.





**Contents:**

Page 4 to 7  
ARCOS Universal

Page 8 to 11  
ARCOS Studio

Page 12 to 15  
ARCOS Office

Page 16 to 17  
Service and Support

Page 18 to 19  
Surface finishes

Page 19 can be folded out  
to provide you with all the  
surface finishes available for  
selection at a glance.

## ARCOS Universal

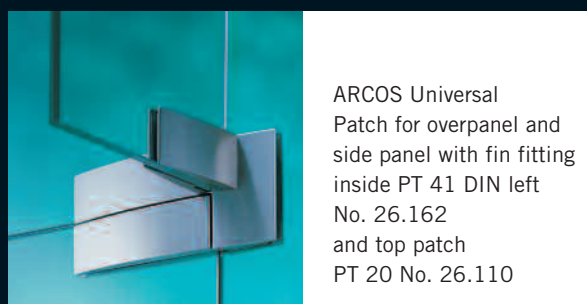
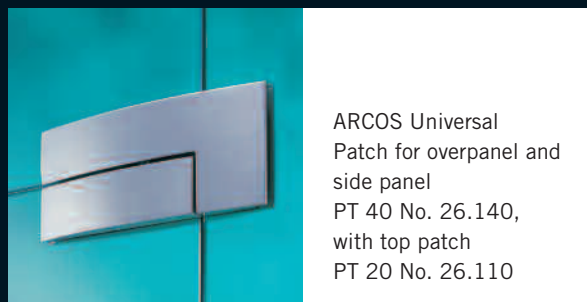
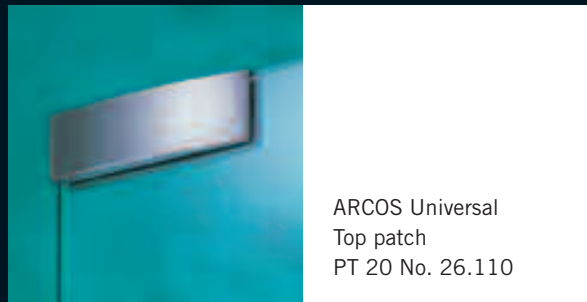
### **Versatility plus multiplicity.**

### **Unlimited scope.**

Patch fittings and connector hardware for overpanels and side panels, fin fittings for particularly large systems – with the curved arc motif of the ARCOS design always incorporated in each component. Gentle reflections that change with the planes give both the glass and its fittings the appearance of a harmonious whole. ARCOS Universal is flexible in its application – for a glass thickness of 10 mm in the standard version plus glazing of 8 or 12 mm thickness if required. The pivot point can be set at either 55 or 65 mm.

Door weights can be anything up to 100 kg, with widths up to max. 1,100 mm and with door rails even panels up to 150 kg and 1,400 mm are feasible. The illustrations show just a few examples from the comprehensive ARCOS Universal collection – products offering 24 possible standard combinations for toughened glass assemblies. The innovative clip-on technique incorporated in the hardware ensures that the cover caps can be secured to the basic components so that the fixing is virtually invisible.





Fold out page 19 to make your  
selection of surface finish.





## ARCOS Universal

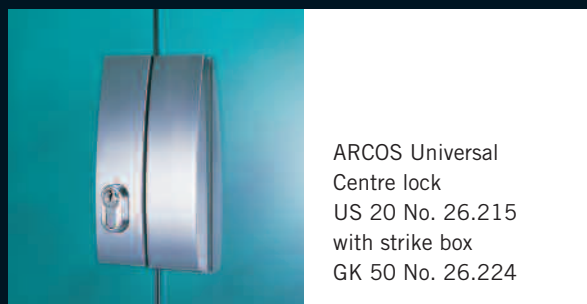
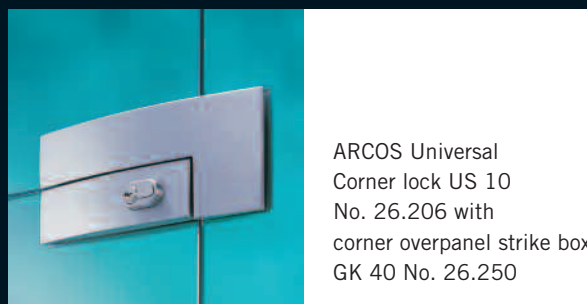
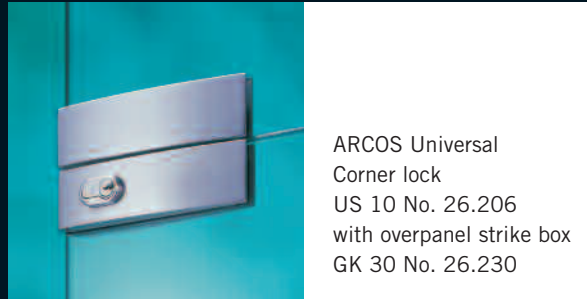
### **Fascinating functionality.**

Experience that counts: DORMA-Glas meets every challenge with the right solution. Versatile and proven lock variants are provided in line with every security requirement, offering convincingly smooth operation for that feeling of confidence. Precision down to the last detail: The lock fittings comply with DIN 18251, Class 3, in relation to their type approval testing – 50,000 operating cycles of the locking bolt.

Furthermore the lock was tested successfully by a neutral testing institute with 100,000 locking bolt operating cycles.

They also offer outstanding corrosion resistance in line with Class 4, according to DIN EN 1670.





Fold out page 19 to make your  
selection of surface finish.

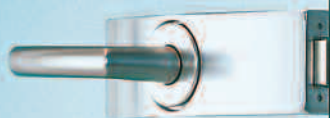


## ARCOS Studio

### **Accent on the attractive.**

The epitome of elegance: ARCOS Studio emphasises the abundance and generosity of the glass surface. Each door fitting and each hinge underline the value of transparency in interior architecture.

With various surface finishes and lever handle types, the system is able to harmonise with both design-oriented and functional environments.







ARCOS Studio Lock  
non-lockable, lever  
No. 24.211  
handle to the front,  
prepared for rose-mounted  
lever handle – with  
ARCOS rose-mounted  
lever handle No. 24.307



ARCOS Studio Lock  
non-lockable, lever  
No. 24.200  
handle to the rear, with  
follower and lever handle  
model No. 24.303



ARCOS Studio Lock  
with Europrofile cylinder,  
No. 24.212  
prepared for rose-mounted  
lever handle – with lever  
handle model No. 24.308



ARCOS Studio Lock  
with warded lever lock  
No. 24.303, with follower  
and ARCOS lever handle  
No. 24.301



ARCOS Studio Lock  
with thumbturn (WC)  
No. 24.206,  
with follower and ARCOS  
lever handle No. 24.301

Fold out page 19 to make your  
selection of surface finish.



## ARCOS Studio

### **A rich selection of designer hardware.**

ARCOS Studio adorns glazed doors of 8 or 10 mm thickness with a standard frame rebate depth of 24 mm (for 8 mm glass thickness) and 26 mm (for 10 mm glass thickness). Solutions involving a frame rebate of up to 40 mm can also be implemented with the aid of appropriately sized packing elements. The wide-ranging combinations of lock functions, surface finishes and lever handle models is particularly impressive.

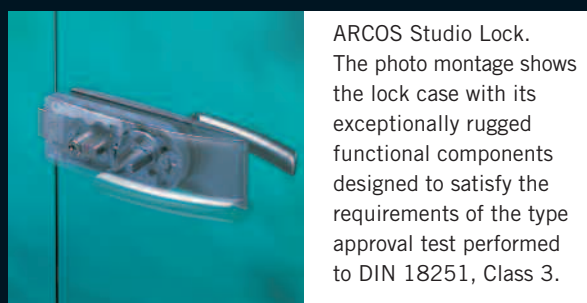
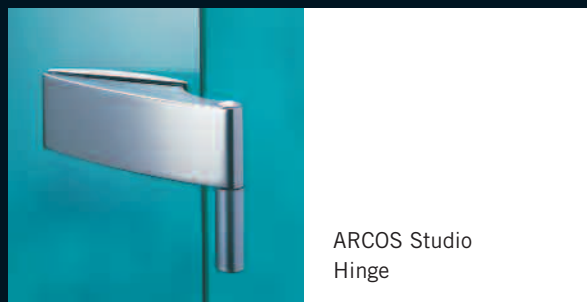
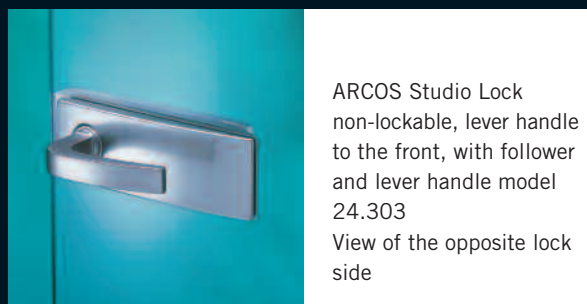
Three different lever handle types can be installed with roses or followers – and located either to the front or

to the rear in the case of non-lockable lock fittings.

And there is also plenty of choice of lockable lock models: with warded lever lock, Europrofile cylinder or Swiss standard 22 mm round cylinder.

The illustrations just show a small selection of the many combinations that are possible. All these lock fittings comply with DIN 18251, Class 3, in relation to their type testing – 200,000 operating cycles of the latch function and 50,000 operating cycles of the locking bolt.





Fold out page 19 to make your  
selection of surface finish.



## ARCOS Office

### **Heavy-duty elegance.**

Reliable: ARCOS Office glass door fittings are able to withstand heavy usage. Day in, day out.

Whether non-lockable or prepared for Europrofile cylinders – DORMA's Office fittings have a long and successful track record, particularly in the project sector. ARCOS combines proven functionality with aesthetic elegance.





ARCOS Office Lock  
non-lockable, DIN right,  
No. 25.209,  
prepared for rose-mounted  
lever handle – with ARCOS  
rose-mounted lever handle  
No. 24.307



ARCOS Office Lock  
with Europrofile cylinder,  
DIN right, No. 25.261,  
with follower and ARCOS  
lever handle No. 24.301



ARCOS Office Lock  
with Europrofile cylinder,  
DIN right, No. 25.201,  
prepared for rose-mounted  
lever handle – with  
ARCOS rose-mounted lever  
handle No. 24.307 and  
strike box No. 25.206



ARCOS Office Lock  
with warded lever lock,  
DIN right, No. 25.263,  
with follower and ARCOS  
lever handle No. 24.301



ARCOS Office Lock  
prepared for KABA,  
DIN right, No. 25.241,  
prepared for rose-mounted  
lever handle – with  
ARCOS rose-mounted  
lever handle No. 24.307

Fold out page 19 to make your  
selection of surface finish.





## ARCOS Office

### **Prestigious in all its variants.**

ARCOS Office is designed for glass thicknesses of 8 or 10 mm and a frame rebate depth of 24 mm (for 8 mm glass thickness) and 26 mm (for 10 mm glass thickness). There is a selection of various hinge types and lever handle designs with or without rose. And a lever handle specially designed for the ARCOS range completes the integrated design concept. It repeats the radius of the fitting for perfect styling harmony. Standard types of fittings in the materials and surface finishes indicated are available from stock.

Special finishes with anodised colours and other coatings can also be quickly provided on request.

The Locks comply to the current DIN EN 12209. They are designed for use in public buildings. Moreover these locks were tested successfully by a neutral testing institute with 500,000 latch and 100,000 locking bolt operating cycles

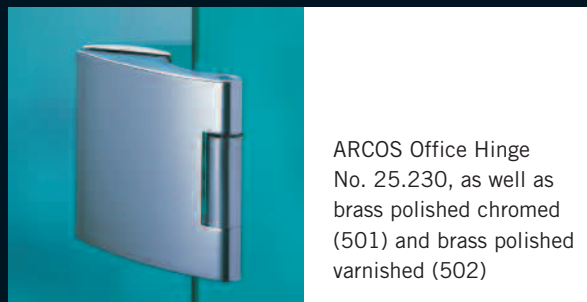
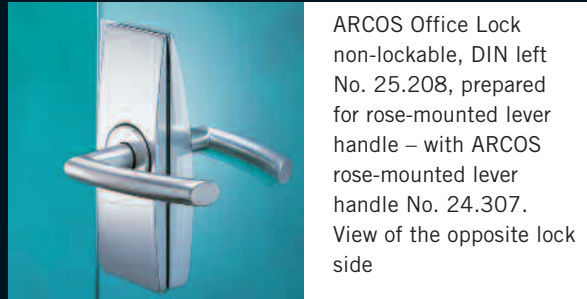
The Lock insert is equipped with low-noise "whisper" functionality as standard. The whisper latch (study metal latch - partially plastics-sheathed and damped latch motions for

noise minimisation) satisfy particularly high expectations, including the requirements of government agencies and public authorities.

For avoidance of "lever handle sag" (droop) the lever handle follower is adjustable  $\pm 1^\circ$  and patent pending. Further on a special self-adjusting the clamp follower holds the lever handle perfectly secure. The fully closed lock case provides optimum protection for the internal components which themselves are of rugged unit construction.

Special versions of the fitting manufactured in high-grade anti-corrosion materials are available for wet room applications.





Fold out page 19 to make your  
selection of surface finish.

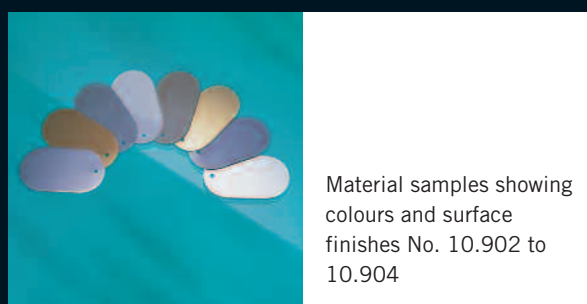
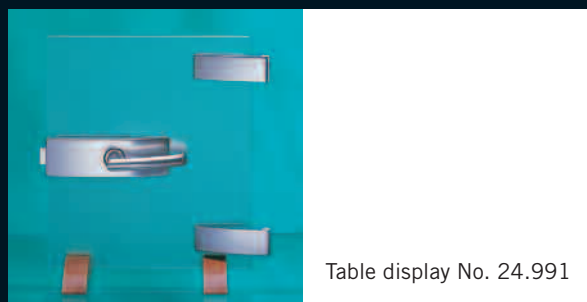
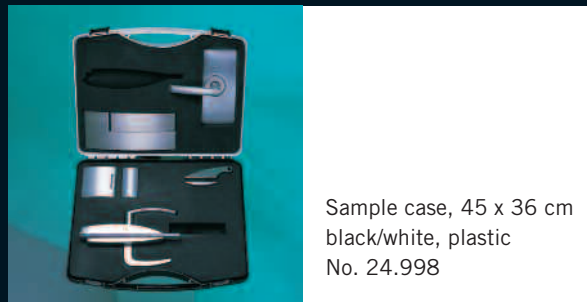


## Support...

... and the desire to accommodate customer requirements are naturally integral to the DORMA-Glas philosophy. So if a room is designed in glass with timber doors, the ARCOS range must also offer a corresponding lever handle – one specifically created for timber doors.

Effective presentation aids can also be supplied. They both demonstrate and reflect the high level of sophistication of the ARCOS range. Various table displays, a fan-type colour and surface finish selector plus one sample case are available.

The technical brochure contains detailed functional descriptions and dimensional data relating to all the models and variants of the ARCOS range.







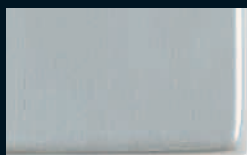
## Surface finishes

**Simply fold out and read off your colour selection.**

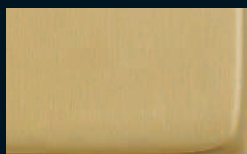
The ARCOS product range is available in a wide range of surface finishes. The availability of the various colours for the different ARCOS models is indicated on this fold-out page by the arrows on the relevant product pages.

<sup>1)</sup> Availability of these surface finishes on request

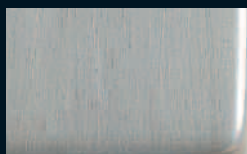
The printed colours indicating the surface finishes are not 100 % true, but do provide a useful guide.



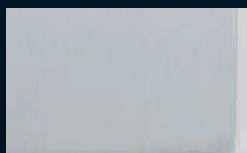
103  
aluminium silver brilliant  
(only with ARCOS Studio)



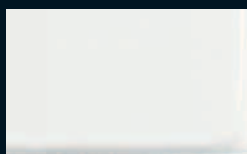
105  
aluminium brass-coloured EV3  
(only with ARCOS Studio and  
ARCOS Office)



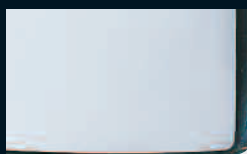
107  
aluminium similar to satin  
stainless steel  
(only with ARCOS Studio and  
ARCOS Office)



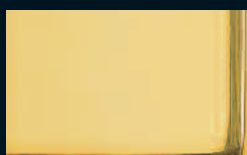
114  
aluminium silver anodised  
EV1 deko



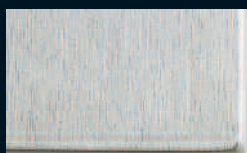
300  
aluminium white powder-coated  
RAL 9016



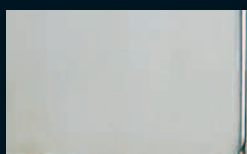
501  
brass polished chromed



502  
brass polished varnished



700  
satin stainless steel  
(only with ARCOS Universal)



701  
polished stainless steel  
(only with ARCOS Universal)

<sup>1)</sup> Special colour coatings, special  
anodised finishes

>

>

>

>

>

>

>

>

>



Glasbeschlagtechnik  
Glass fittings and accessories  
DORMA-Glas GmbH  
Postfach 32 68  
D-32076 Bad Salzuflen  
Max-Planck-Straße 33 - 45  
D-32107 Bad Salzuflen  
Tel. +49 5222 924-0  
Fax +49 5222 21009  
[www.dorma-glas.com](http://www.dorma-glas.com)

# ARCOS<sup>®</sup>

## Universal Studio Office

Unique design with  
in-built system versatility





## A fitting harmony for ideas in glass

Wherever glazing and its hardware need to merge into a single entity, our ARCOS product line offers the ideal transition.

Offering gentle lines with a flowing design, this range of fixings, fittings and furniture provides the perfect blend between the two primary materials. Metal and glass appear to combine seamlessly – with the arc-like curvature of the ARCOS range characterising all the hardware in the programme. Inside and out. With its extensive experience in the materials involved and the associated manufacturing techniques, DORMA has all the production capabilities required to apply this sophisticated capping

geometry. And the ARCOS system has already been singled out for the red dot award 2001 conferred by Design Zentrum NRW in Germany.

With the corresponding fittings from DORMA-Glas, it is possible to create in this style all the standard types of toughened glass assemblies and interior glass doors. Single and double doors can be readily fabricated using this system, and matched with glass side panels and overpanels for that integral look. Lock-handle combinations ensure maximum convenience and security. The ARCOS design offers integration on internal door lock fittings of both lever handles for followers

and lever handles with roses. The roses are flush with the capping for perfect streamlining. Door rails for heavy or high-usage doors complement the portfolio.

All the fittings are of modular design and essentially comprise the basic units, functional inserts and clip-on covers in a variety of surface finishes. The requisite glass apertures and drilled holes correspond to the standard requirements and can thus be provided quickly and without problem.

High-quality materials and excellent workmanship ensure a long service lifetime combined with a truly attractive appearance.





**Contents:**

Page 4 to 7  
ARCOS Universal

Page 8 to 11  
ARCOS Studio

Page 12 to 15  
ARCOS Office

Page 16 to 17  
Service and Support

Page 18 to 19  
Surface finishes

Page 19 can be folded out  
to provide you with all the  
surface finishes available for  
selection at a glance.

## ARCOS Universal

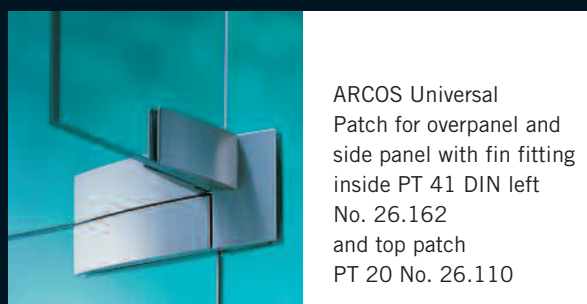
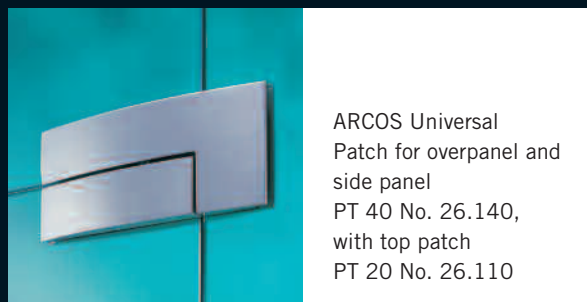
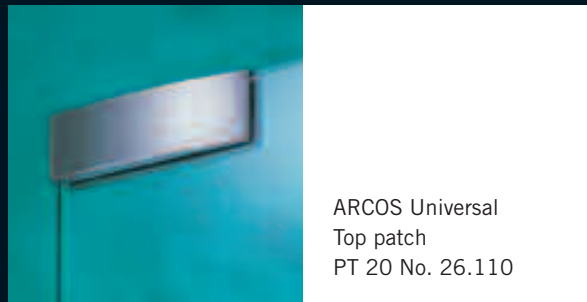
### **Versatility plus multiplicity.**

### **Unlimited scope.**

Patch fittings and connector hardware for overpanels and side panels, fin fittings for particularly large systems – with the curved arc motif of the ARCOS design always incorporated in each component. Gentle reflections that change with the planes give both the glass and its fittings the appearance of a harmonious whole. ARCOS Universal is flexible in its application – for a glass thickness of 10 mm in the standard version plus glazing of 8 or 12 mm thickness if required. The pivot point can be set at either 55 or 65 mm.

Door weights can be anything up to 100 kg, with widths up to max. 1,100 mm and with door rails even panels up to 150 kg and 1,400 mm are feasible. The illustrations show just a few examples from the comprehensive ARCOS Universal collection – products offering 24 possible standard combinations for toughened glass assemblies. The innovative clip-on technique incorporated in the hardware ensures that the cover caps can be secured to the basic components so that the fixing is virtually invisible.





Fold out page 19 to make your  
selection of surface finish.



## ARCOS Universal

### **Fascinating functionality.**

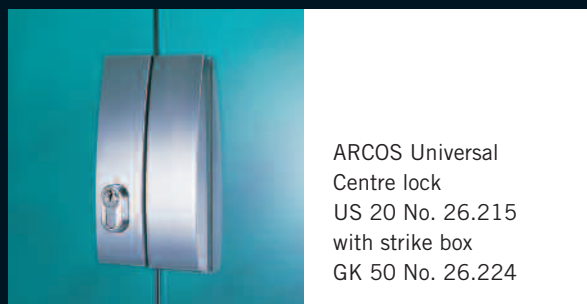
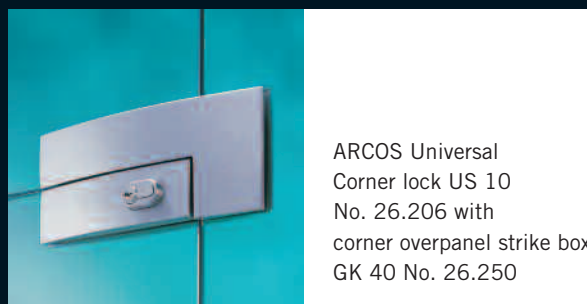
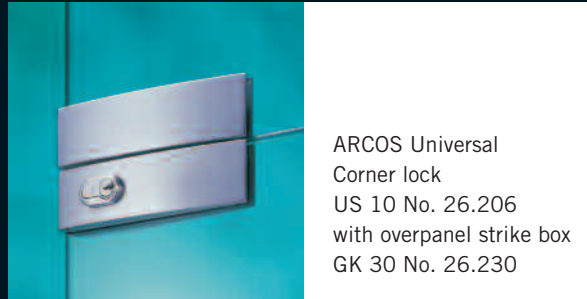
Experience that counts: DORMA-Glas meets every challenge with the right solution. Versatile and proven lock variants are provided in line with every security requirement, offering convincingly smooth operation for that feeling of confidence. Precision down to the last detail: The lock fittings comply with DIN 18251, Class 3, in relation to their type approval testing – 50,000 operating cycles of the locking bolt.

Furthermore the lock was tested successfully by a neutral testing institute with 100,000 locking bolt operating cycles.

They also offer outstanding corrosion resistance in line with Class 4, according to DIN EN 1670.







Fold out page 19 to make your  
selection of surface finish.



## ARCOS Studio

### **Accent on the attractive.**

The epitome of elegance: ARCOS Studio emphasises the abundance and generosity of the glass surface. Each door fitting and each hinge underline the value of transparency in interior architecture.

With various surface finishes and lever handle types, the system is able to harmonise with both design-oriented and functional environments.





ARCOS Studio Lock  
non-lockable, lever  
No. 24.211  
handle to the front,  
prepared for rose-mounted  
lever handle – with  
ARCOS rose-mounted  
lever handle No. 24.307



ARCOS Studio Lock  
non-lockable, lever  
No. 24.200  
handle to the rear, with  
follower and lever handle  
model No. 24.303



ARCOS Studio Lock  
with Europrofile cylinder,  
No. 24.212  
prepared for rose-mounted  
lever handle – with lever  
handle model No. 24.308



ARCOS Studio Lock  
with warded lever lock  
No. 24.303, with follower  
and ARCOS lever handle  
No. 24.301



ARCOS Studio Lock  
with thumbturn (WC)  
No. 24.206,  
with follower and ARCOS  
lever handle No. 24.301

Fold out page 19 to make your  
selection of surface finish.



## ARCOS Studio

### **A rich selection of designer hardware.**

ARCOS Studio adorns glazed doors of 8 or 10 mm thickness with a standard frame rebate depth of 24 mm (for 8 mm glass thickness) and 26 mm (for 10 mm glass thickness). Solutions involving a frame rebate of up to 40 mm can also be implemented with the aid of appropriately sized packing elements. The wide-ranging combinations of lock functions, surface finishes and lever handle models is particularly impressive.

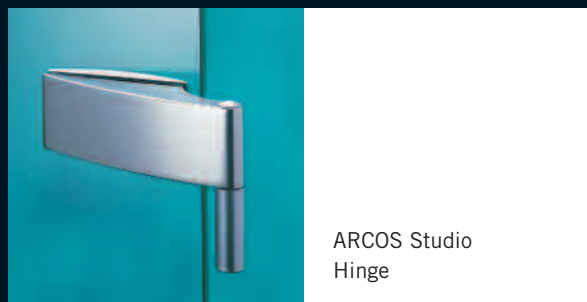
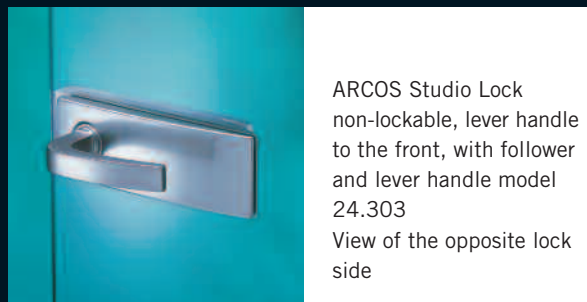
Three different lever handle types can be installed with roses or followers – and located either to the front or

to the rear in the case of non-lockable lock fittings.

And there is also plenty of choice of lockable lock models: with warded lever lock, Europrofile cylinder or Swiss standard 22 mm round cylinder.

The illustrations just show a small selection of the many combinations that are possible. All these lock fittings comply with DIN 18251, Class 3, in relation to their type testing – 200,000 operating cycles of the latch function and 50,000 operating cycles of the locking bolt.





Fold out page 19 to make your  
selection of surface finish.



## ARCOS Office

### **Heavy-duty elegance.**

Reliable: ARCOS Office glass door fittings are able to withstand heavy usage. Day in, day out.

Whether non-lockable or prepared for Europrofile cylinders – DORMA's Office fittings have a long and successful track record, particularly in the project sector. ARCOS combines proven functionality with aesthetic elegance.







ARCOS Office Lock  
non-lockable, DIN right,  
No. 25.209,  
prepared for rose-mounted  
lever handle – with ARCOS  
rose-mounted lever handle  
No. 24.307



ARCOS Office Lock  
with Europrofile cylinder,  
DIN right, No. 25.261,  
with follower and ARCOS  
lever handle No. 24.301



ARCOS Office Lock  
with Europrofile cylinder,  
DIN right, No. 25.201,  
prepared for rose-mounted  
lever handle – with  
ARCOS rose-mounted lever  
handle No. 24.307 and  
strike box No. 25.206



ARCOS Office Lock  
with warded lever lock,  
DIN right, No. 25.263,  
with follower and ARCOS  
lever handle No. 24.301



ARCOS Office Lock  
prepared for KABA,  
DIN right, No. 25.241,  
prepared for rose-mounted  
lever handle – with  
ARCOS rose-mounted  
lever handle No. 24.307

Fold out page 19 to make your  
selection of surface finish.





## ARCOS Office

### **Prestigious in all its variants.**

ARCOS Office is designed for glass thicknesses of 8 or 10 mm and a frame rebate depth of 24 mm (for 8 mm glass thickness) and 26 mm (for 10 mm glass thickness). There is a selection of various hinge types and lever handle designs with or without rose. And a lever handle specially designed for the ARCOS range completes the integrated design concept. It repeats the radius of the fitting for perfect styling harmony. Standard types of fittings in the materials and surface finishes indicated are available from stock.

Special finishes with anodised colours and other coatings can also be quickly provided on request.

The Locks comply to the current DIN EN 12209. They are designed for use in public buildings. Moreover these locks were tested successfully by a neutral testing institute with 500,000 latch and 100,000 locking bolt operating cycles

The Lock insert is equipped with low-noise "whisper" functionality as standard. The whisper latch (study metal latch - partially plastics-sheathed and damped latch motions for

noise minimisation) satisfy particularly high expectations, including the requirements of government agencies and public authorities.

For avoidance of "lever handle sag" (droop) the lever handle follower is adjustable  $\pm 1^\circ$  and patent pending. Further on a special self-adjusting the clamp follower holds the lever handle perfectly secure. The fully closed lock case provides optimum protection for the internal components which themselves are of rugged unit construction.

Special versions of the fitting manufactured in high-grade anti-corrosion materials are available for wet room applications.

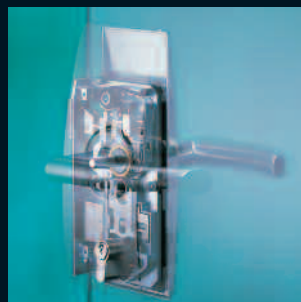




ARCOS Office Lock  
non-lockable, DIN left  
No. 25.208, prepared  
for rose-mounted lever  
handle – with ARCOS  
rose-mounted lever  
handle No. 24.307.  
View of the opposite lock  
side



ARCOS Office Hinge  
No. 25.230, as well as  
brass polished chromed  
(501) and brass polished  
varnished (502)



ARCOS Office Lock.  
The photo montage  
shows the lock case with  
its exceptionally rugged  
functional components  
designed to satisfy the  
requirements of the type  
approval test performed  
to DIN 18251, Class 3.

Fold out page 19 to make your  
selection of surface finish.

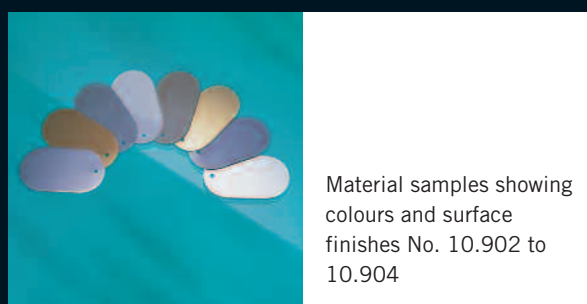
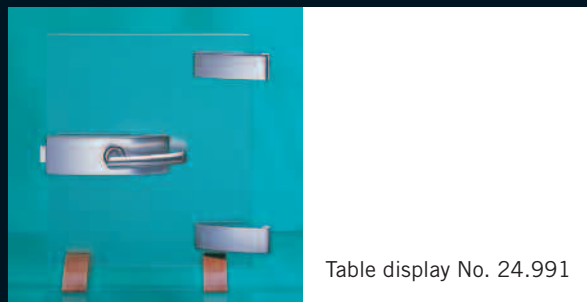
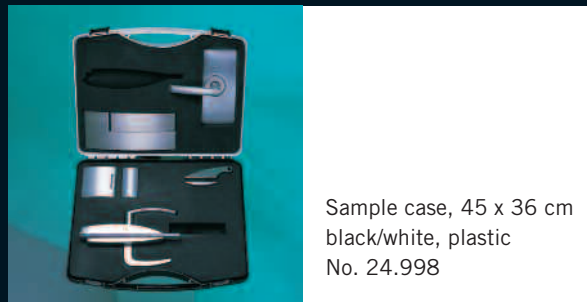


## Support...

... and the desire to accommodate customer requirements are naturally integral to the DORMA-Glas philosophy. So if a room is designed in glass with timber doors, the ARCOS range must also offer a corresponding lever handle – one specifically created for timber doors.

Effective presentation aids can also be supplied. They both demonstrate and reflect the high level of sophistication of the ARCOS range. Various table displays, a fan-type colour and surface finish selector plus one sample case are available.

The technical brochure contains detailed functional descriptions and dimensional data relating to all the models and variants of the ARCOS range.





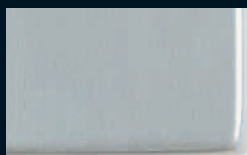
## Surface finishes

**Simply fold out and read off your colour selection.**

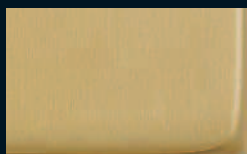
The ARCOS product range is available in a wide range of surface finishes. The availability of the various colours for the different ARCOS models is indicated on this fold-out page by the arrows on the relevant product pages.

<sup>1)</sup> Availability of these surface finishes on request

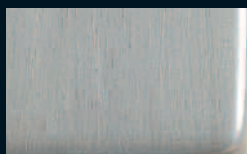
The printed colours indicating the surface finishes are not 100 % true, but do provide a useful guide.



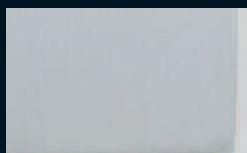
103  
aluminium silver brilliant  
(only with ARCOS Studio)



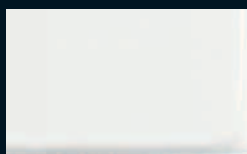
105  
aluminium brass-coloured EV3  
(only with ARCOS Studio and  
ARCOS Office)



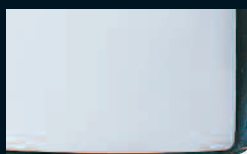
107  
aluminium similar to satin  
stainless steel  
(only with ARCOS Studio and  
ARCOS Office)



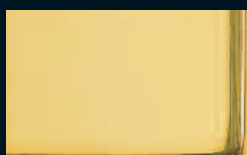
114  
aluminium silver anodised  
EV1 deko



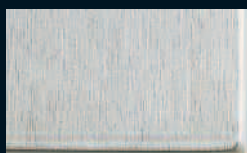
300  
aluminium white powder-coated  
RAL 9016



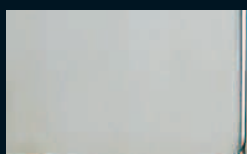
501  
brass polished chromed



502  
brass polished varnished



700  
satin stainless steel  
(only with ARCOS Universal)



701  
polished stainless steel  
(only with ARCOS Universal)

<sup>1)</sup> Special colour coatings, special  
anodised finishes



>

>

>

>

>

>

>

>

>



Glasbeschlagtechnik  
Glass fittings and accessories  
DORMA-Glas GmbH  
Postfach 32 68  
D-32076 Bad Salzuflen  
Max-Planck-Straße 33 - 45  
D-32107 Bad Salzuflen  
Tel. +49 5222 924-0  
Fax +49 5222 21009  
[www.dorma-glas.com](http://www.dorma-glas.com)

# DORMA

## BSW-G /-R



## Mehr Raum mit Mehrwert

Terrassen, Balkone und Veranden erweitern den Lebensraum. Sie bilden die Schwelle von draußen nach drinnen, von der freien Natur zum geschützten Wohnbereich. Leider bleibt die Nutzung dieser zusätzlichen Flächen häufig zu sehr auf die warmen Sommertage beschränkt. Dabei haben gerade die Übergangs-Jahreszeiten Frühling und Herbst mit ihren vielen Veränderungen und ihrem intensiven Farbenspiel viel zu bieten.

DORMA BSW Balkon-Schiebe-Wände liefern nun eine adäquate Lösung, um auch Außenbereiche durch bewegliche Wind- und Wetterschutzverglasung weit über den Sommer hinaus zu nutzen. Sie steigern die Wohnqualität und setzen architektonische Akzente. Ganz gleich, ob auf Balkonen von Mehrfamilien-Häusern als Bereicherung

der Fassadenstruktur oder als raumhohe Elemente bei der Einbindung einer Terrasse in den Wohnbereich. Je nach Anforderung steht das System als Ganzglasversion mit freien seitlichen Glaskanten (BSW-G) oder mit gerahmten Einzelflügeln (BSW-R) zur Verfügung. Eine Spaltlüftung zwischen den Gläsern sorgt bei der Ganzglasausführung für optimale Luftzirkulation, sodass Feuchtigkeit jederzeit entweichen kann. Bei der gerahmten Version erlaubt ein Dreh-Kipp-Flügel die Lüftung des ansonsten geschlossenen Bereiches.

Unterschiedliche Anlagenverläufe machen die Anpassung an die vorhandene Architektur möglich. Neben dem geraden Verlauf sind bei BSW-R 90° und 135° Winkel möglich; BSW-G lässt mit jedem beliebigen Winkel auch radial segmentierte Anlagen zu.

## More space for added value

Balconies, terraces and verandas are an effective way of increasing your living space. They also provide an extended threshold, linking outdoors and indoors and bringing the wonders of nature closer to the protected living area. Unfortunately, however, utilisation of these additional spaces is all too often restricted to warm summer days, while the transitional seasons of spring and autumn – with their many changes and exciting interplay of colours – have much to offer. Now, DORMA BSW balcony sliding walls – operable glass panels for wind and weather protection – are able to provide an effective solution, enabling these interfaces with the outside to be enjoyed far beyond the summer months. They enhance the quality of life while also adding a new architectural accent. Whether installed on balconies of multi-storey apartment blocks, enriching the façade structure, or as room-high elements for incorporating a terrace into

the living area, they can be a real benefit to any building. Depending on requirements, the system can be supplied either in its all-glass version with the lateral glazing edges exposed (BSW-G) or with fully framed individual panels (BSW-R).

Gap ventilation between the glass sheets in the case of the all-glass version ensures optimum air circulation, allowing moisture to readily escape at all times. In the framed construction, a tilt-and-turn panel provides ventilation for the otherwise closed-in area. The availability of different layout configurations means that the system can be readily adapted to the existing architecture. Aside from the straight-line version, 90° and 135° angles are also possible with the BSW-R, while the BSW-G can be arranged in radially segmented configurations incorporating any angles required.



## BSW – Allgemeiner Anlagenaufbau

Den Anschluss an die vorhandene Bausubstanz bilden obere und untere Laufschiennenprofile. Durch sie werden die Flügel sicher geführt.

Das obere Laufschiennenprofil wird direkt an die Decke montiert. Zum Ausgleich von Bautoleranzen ist optional auch ein Höhenausgleichsprofil lieferbar.

Die Bodenschiene ist mit entwässernder Putz- und Kondenswasser-Rinne ausgerüstet. Zum Beispiel bei Terrassen-Anlagen in voller Raumhöhe kann die Bodenschiene aber auch in den Fußboden eingelassen werden.

Ein ausgeklügeltes nadelgelagertes Rollensystem sorgt für optimale Laufeigenschaften und eine lange Lebensdauer.

Bei Anlagen mit geradem Verlauf oder einer 90° Abwinkelung sind die Schiebeflügel an zwei oberen und einem unteren Punkt geführt. Die oben in Öffnungsrichtung des Flügels montierte Dreirad-Rolle übernimmt zusammen mit dem unteren Führungsstift beim Aufdrehen der Flügel die Funktion der Drehpunkte. Die mit nur zwei Rädern niedriger aufgebaute Rolle am anderen Ende der oberen Türschiene wird dann aus dem Auslass im oberen Laufschiennenprofil herausgeschwenkt. Durch die Drehbewegung greift die patentierte Hubbremse in der Dreirad-Rolle in die Bremsplatte ein und verhindert ein Zurückrollen des Flügels.

## BSW – Main design features

The system is integrated within the existing structure by means of its top and bottom track rails which serve to securely locate the panels.

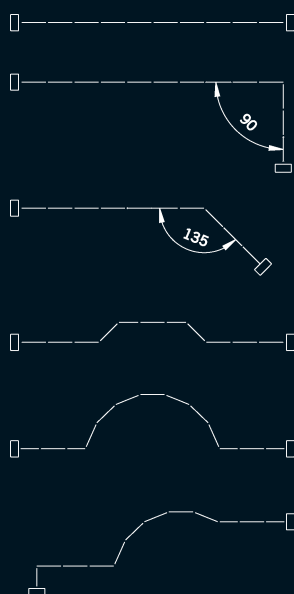
The top track rail is fixed directly to the ceiling. An optional height-adjustment profile is also available to compensate for structural tolerances.

The bottom guide rail features a cleaning water and condensate drainage channel. In the case of terrace systems extending over the full height of the enclosed space, for example, the bottom track may also be recessed into the floor.

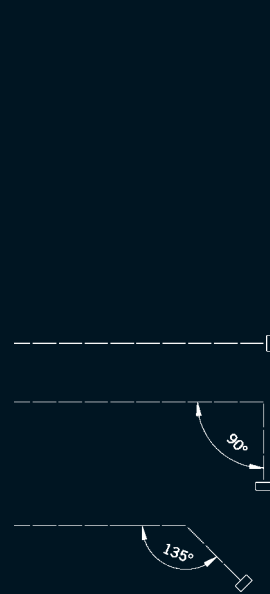
An ingenious carrier system with rollers mounted in needle bearings ensures

optimum smoothness of operation and long service life.

In systems with a straight-line configuration or 90° corners, the sliding panels are guided at two points top and one point bottom. The three-roller carrier mounted at the top of the panel towards the opening direction combines with a bottom guide pin. These then provide the pivots for swinging the panels into their stacking position when the partition is opened. The shallower two-roller carrier mounted at the other end of the top glazing rail is then swung out from the exit opening in the top track rail. The pivot motion causes the patented extending brake in the three-roller carrier to engage with the braking plate, preventing the panel from rolling back.



Anlagenverläufe für BSW-G  
Run of assemblies for BSW-G



Anlagenverläufe für BSW-R  
Run of assemblies for BSW-R



## BSW-G Systemdetails

Die Gläser werden in die obere und untere Türschiene geklebt. Durch eine Ausklinkung im Glas werden sie mit einem gehärteten Stahlstift zusätzlich gesichert.

Die Stirnabdeckungen aus Kunststoff sind in den Stoßbereichen als Steckkonstruktion ausgebildet und stabilisieren bei gerade verlaufenden Anlagen die Flügel untereinander.

Anders bei segmentierten Anlagenverläufen: Hier ist zur Stabilisierung ein zweiter unterer Führungsstift vorgesehen. Er macht einen Auslass in der unteren Laufschiene erforderlich. Als Standard ist im Bereich der seitlichen Anschlüsse

der Anlage an das Mauerwerk zur besseren Belüftung ein 11 mm breiter Spalt vorgesehen. Dieser wird durch ein Wetterschutzprofil gegen Schlagregen geschützt. Optional kann bei entsprechend schmaler Ausbildung des Lüftungsschlitzes (7 mm) auch auf das Schutzprofil verzichtet werden.

Der Chromstahl-Drehknäuf in elegantem Design öffnet und schließt über eine Stahlseilverbindung die obere und untere Verriegelung des ersten Flügels. Als Standard innen, ist optional aber auch eine Anbringung außen oder beidseitig möglich.

## BSW-G System details

The glass sheets are adhesive-bonded in the top and bottom glazing rails and are further secured by a hardened steel pin passing through a recess in the glass.

The plastic end covers are of interlocking design and serve to stabilise the panels in their extended inline arrangement. Radially segmented system configurations feature a second bottom guide pin as a stabilising device. This means that an exit point is also required in the bottom track rail. In the area of the lateral meeting point between the system and the masonry, an 11 mm wide gap is provided for

improved ventilation. This is covered by a weather-protective angle section to repel driving rain. As an option, the protective profile can be eliminated, in which case the ventilation gap has to be reduced to 7 mm.

The elegantly designed chromium steel thumbturn opens and closes the top and bottom locks of the first panel via a cable mechanism.

This is provided on the inside as standard, although external fixing or knobs on both sides is also available as an option.



## Technische Details BSW-G

- max. Flügelgewicht 60 kg
- max. Flügelbreite 800 mm
- max. Flügelhöhe 2800 mm
- max. Flügelanzahl ist abhängig von der Flügelbreite, technisch können bis zu 12 Flügel zu einer Seite geparkt werden
- Glasdicken 6, 8 oder 10 mm
- Glasarten ESG oder VSG

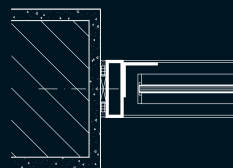
## Technical Details BSW-G

- max. panel weight 60 kg
- max. panel width 800 mm
- max. panel height 2800 mm
- max. panel number depends on panel width, technically up to 12 panels can be parked to one side
- glass sheet thicknesses 6, 8 or 10 mm
- glazing types tempered/toughened or laminated safety glass



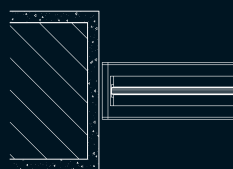
Durch die starkwandige obere Laufschiene ist das einseitige Parken einer Vielzahl von Flügeln möglich. Option: Höhenausgleichsprofil lieferbar. Untere Schiene kann in den Boden eingelassen werden – keine Stolperschwelle.

Heavy-gauge track profile enables a number of panels to be stacked at one end. Option: Height-adjustment profile also available. No obstructive “trip-up” edge as bottom track can be recessed in floor.



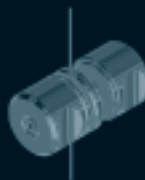
Seitlicher Wandanschluss mit Rahmen und Wetterschutzwinkel

Lateral meeting point between masonry and system panel with frame and weather-protective angle section



Seitlicher Wandanschluss ohne Rahmen

Lateral meeting point between masonry and system panel without frame



Chromstahl-Dreholive in elegantem Design. Positioniert auf idealer Bedienungshöhe sorgt sie für einfaches Öffnen des ersten Flügels. Option: Innen, außen und beidseitiges Anbringen möglich.

Elegant chromium steel thumbturn. Positioned at ideal operating height for easy opening of the first panel. Options: Mounting on the inside, outside or both sides



## BSW-R Systemdetails

Die einzelnen Flügel bestehen aus Isolierglas mit einem rundum laufenden, nicht thermisch getrennten Aluminium-Profil. Im geraden Verlauf greifen die seitlichen Profile der Schiebeflügel zur Stabilisierung der Anlage nach dem Nut-und-Feder-Prinzip ineinander.

Der erste Flügel ist als Dreh-Kipp-Flügel ausgebildet. Über einen Fenstergriff wird dieser Flügel zum Lüften gekippt oder in seinem Drehpunkt geöffnet. Ein optionaler Profilzylinder sorgt auf Wunsch für zusätzliche Sicherheit.

Um eine ausreichende Belüftung des Raumes zu gewährleisten, empfiehlt sich je nach Größe der Anlage bzw. Volumen des umschlossenen Raumes die Integration eines zweiten Dreh-Kipp-Flügels am anderen Ende der BSW Anlage.

Rahmenmaße:  
Ansichtsbreite der Vertikal-Profile: 39 mm (bzw. 61 mm beim Übergang vom Dreh-Kipp- zum Schiebeflügel),  
Ansichtshöhe der Horizontal-Profile: 55 mm

## BSW-R System details

The individual panels are double-glazed with all-round aluminium frame profiles. The frame has no thermal break. In straight-line configurations, the lateral profiles of the sliding panel interlock using the tongue-and-groove principle to stabilise the system.

The first panel is of tilt-and-turn design and can be operated by means of a window handle for ventilation purposes. An optional europrofile cylinder is also available for additional security.

In order to ensure effective space ventilation, a second tilt-and-turn panel may also be provided at the other end of the BSW partition, depending on the system required and the volume of the enclosed space.

Frame dimensions:  
Visible width of the vertical profiles: 39 mm (or 61 mm for transition from tilt/turn panel and sliding panel).  
Visible height of horizontal profiles: 55 mm

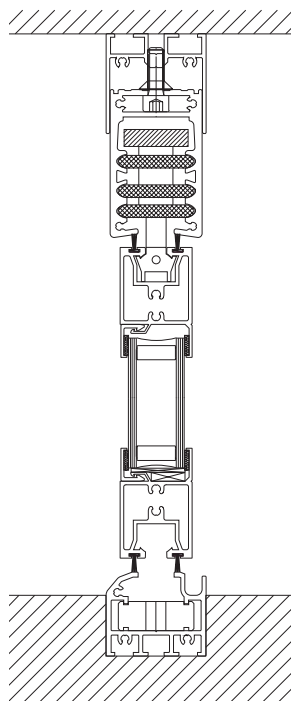


## Technische Details BSW-R

- max. Flügelgewicht 60 kg
- max. Flügelbreite 1000 mm
- max. Flügelhöhe 2600 mm
- max. Flügelanzahl ist abhängig von der Flügelbreite, technisch können bis zu 12 Flügel zu einer Seite geparkt werden
- Glasdicke 28 mm Isolierglas aus 2 x ESG oder VSG, optional mit Sonnenschutz- oder Wärmeisolierungsschicht

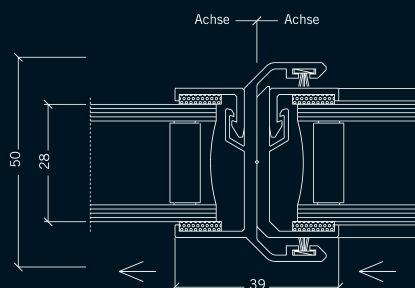
## Technical Details BSW-R

- max. panel weight 60 kg
- max. panel width 1000 mm
- max. panel height 2600 mm
- max. panel number depends on panel width, technically up to 12 panels can be parked to one side
- glass thickness 28 mm insulation glass, 2 x tempered/toughened or laminated safety glass, optional with sunscreen or insulating coating

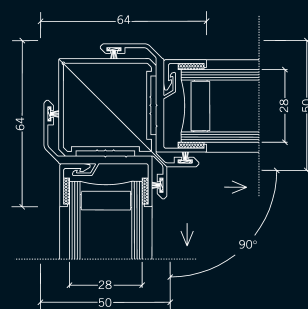


Durch die starkwandige obere Laufschiene ist das einseitige Parken einer Vielzahl von Flügeln möglich  
Option:  
Höhenausgleichsprofil lieferbar.  
Untere Schiene kann in den Boden eingelassen werden kann – keine Störschwelle.

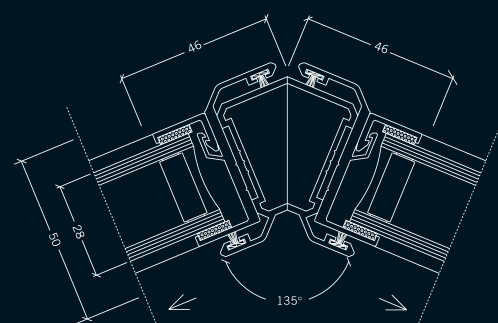
Heavy-gauge track profile enables a number of panels to be stacked at one end.  
Option:  
Height-adjustment profile also available.  
No obstructive “trip-up” edge as bottom track can be recessed in floor.



Elementanschluss Schiebeflügel an Schiebeflügel  
Element connection sliding panel to sliding panel



Elementanschluss 90° Ecke  
Element connection 90° edge



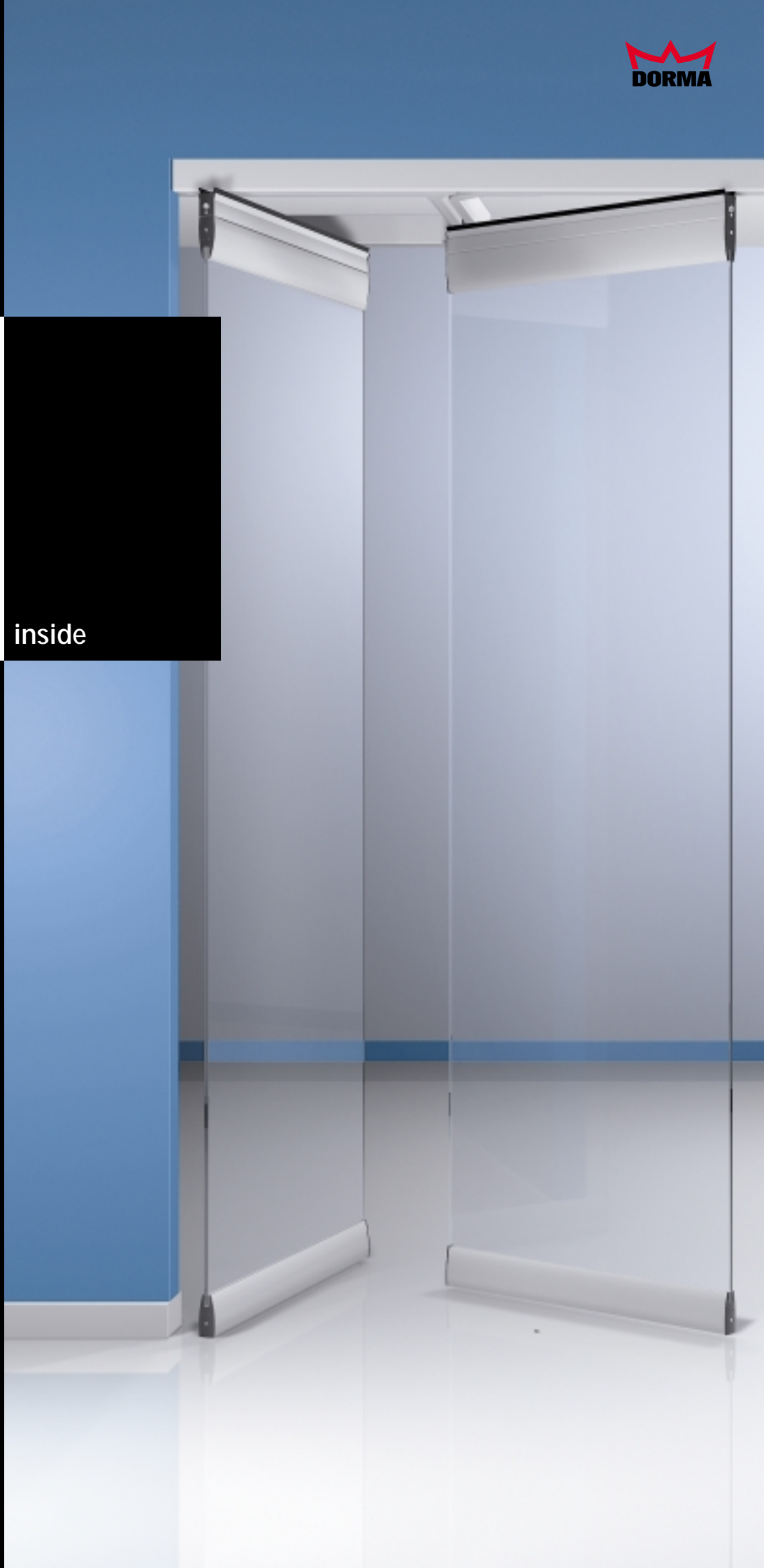
Elementanschluss 135° Ecke  
Element connection 135° edge



Division Glasbeschlagtechnik  
Glass fittings and accessories  
DORMA-Glas GmbH  
Postfach 32 68  
D-32076 Bad Salzuflen  
Max-Planck-Straße 33 - 45  
D-32107 Bad Salzuflen  
Tel. +49 5222 924-0  
Fax +49 5222 21009  
[www.dorma-glas.com](http://www.dorma-glas.com)

Take a look inside

**DORMA**  
**HSW**



## Welcome!



### See, hear, smell...

DORMA HSW glass sliding frontages open the way to all five senses. These sales promoters *par excellence* are almost as imperceptible as they are effective. Drawn by the visible, audible and olfactory attractions that they reveal, customers are

instantly enticed by their friendly invitation to enter the premises!

And when the weather is inclement pivoting or double action doors then providing ideal access with otherwise closed sliding glass partition. The transparent moving wall can be positioned in just a few

moments – ready and able to keep environmental influences firmly on the outside. With pivoting or double action doors then providing ideal access.

And even at the end of the business day, the DORMA HSW can still be relied upon to cast the

establishment in a favourable light. With its wares or decor perfectly displayed behind wide transparency.

Whether it's a question of design, practical scope, seals, thermal insulation or sound-proofing, DORMA-Glas sets international standards.

## Individuality goes without saying

DORMA HSW glass sliding frontages can be flexibly adapted to a wide range of customer requirements - whether as straight, angled or elegantly curved configurations. The beauty of the system is that floor guides are not required, allowing the use of one flooring material throughout

and without breaks.

In addition, virtually any shade and colour combination for the fitting surfaces is possible - so the system can be perfectly aligned to the Corporate Design of the customer company within the framework of an integrated façade and interior design

solution.

Designed for each individual application and precision-made, DORMA HSW glass sliding frontages are equally suitable for both modernisations and new buildings.

DORMA HSW - the best shop window for any company!





## HSW-ARCOS

### Sliced or whole?

Whether stacked to one side or as a closed frontage, HSW-ARCOS is invariably visually unobtrusive and welcoming. Top and bottom door rails give the panels stability. Uncovered lateral glass edges ensure the maximum transparency of the overall system and guarantee that nothing distracts the customer's eye.



### Sliding partitions with profile.

By providing the large glazed areas with that distinctively curved transitions top and bottom, the ARCOS arc adds harmony to the overall appearance. And the door closer is also integrated as a concealed unit for the ultimate in aesthetic perfection. HSW-ARCOS with the ITS 96, size 2-4, is currently the only product on the market to offer such an invisible solution - for a system that keeps the lines smooth and uninterrupted.

The top and bottom door rails thus also contribute to an integrated overall appearance in which the sliding, pivoting and double action panels are so effectively incorporated.



### Uniquely versatile

The system-standard design of HSW-ARCOS perfectly complements ARCOS fittings for toughened glass assemblies and internal doors.

## HSW-G

### The classic for an uninterrupted view.

The panels of the HSW-G sliding glass frontage form a continuous, transparent surface – with side frame elements completely absent. The top and bottom glazing rails provide the system with the necessary stability and also contain the auxiliary

functional components – all discreetly concealed within the profile.

The many alternatives in terms of material finish and colour combinations for the visible surfaces are provided in the form of practical cover sections that simply clip into position after system assembly and

installation. So the shop entrance is able to show off its very best side with an immaculate surface finish right from that all-important opening day.

Each sliding panel can also double up as a door for maximum flexibility. And there is the option of equipping these with various

types of closer from the house of DORMA. For the maximum convenience of customers as they come and go.

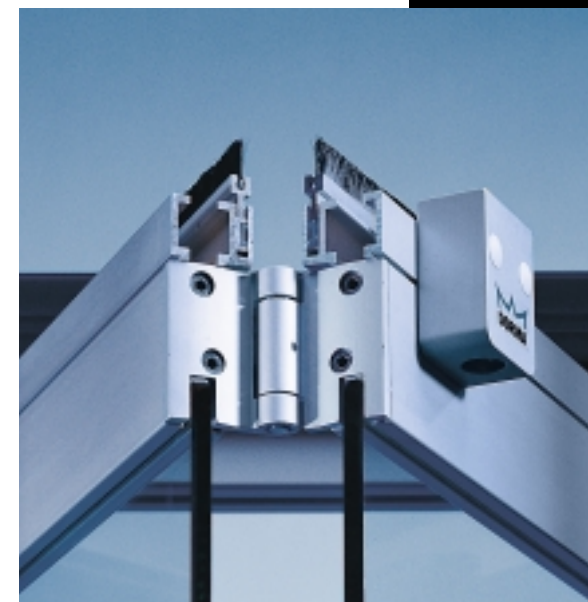
## FSW-G

### The folding variant.

Indeed, there is little to choose between HSW-G and FSW in terms of their visuals and technology.

The door rails of the FSW-G are connected to one another at the top and

bottom by hinges. The closed wall transforms effortlessly into a compact parked stack when required. Without the need for a separate stacking track. Easy as winking!



## FSW-C

### C stands for central -

because the panels of an FSW-C are hung centrally. This is an alternative for confined spaces as the

stacked panels take up only half the space inside and out.





## HSW-GP

### Important factors for exceptional design

The HSW track rail permits a diversity of system layouts and stacking solutions.

Stainless steel single-point fixings from the MANET range hold even curved glass panels securely in place. Thus a practical solution is also a particularly high-quality system. For an unparalleled visual appearance in a contemporary architectural setting.



### Consistent inside and out

What looks good outside the shop is also a winner in the shop interior. Whether for double-action or sliding doors, or as smaller scale furniture fittings, MANET-design single-point fixings put in a polished performance to ensure a harmonious overall picture.



## HSW-R

### Draughts excluded!

The HSW-R fully framed horizontal sliding wall is ideal wherever high wind loads are likely to occur. For example, in the case of large-area shop windows and externally exposed store entrances. The reasons?

Aluminium frames enclose the glass on all sides. Rubber-lipped side profiles and double brush seals top and bottom provide further protection against the weather.

Various types of door closers guarantee extremely smooth movement while the remaining panels stay closed. This is where the ITS 96 comes into its own: integrated neatly into the frame, it is almost fully concealed.



## HSW-ISO

### Warm and cosy.

With the HSW-ISO double glazed system, customers feel comfortable in any weather. Even when it's stormy or snowing, the interior space can be fully utilised with tables and chairs placed right up to the internal glass panel surface! And the big summer heatwave? This too can be locked outside. The thermally insulated sliding glass frontage with all-round thermal-break profiles and extendable top and bottom seals provides reliable protection against extreme temperatures. And the pivoting sliding panels that operate as doors can again be equipped with DORMA cam-action door closers.





Division Glasbeschlagtechnik  
Glass fittings and accessories  
DORMA-Glas GmbH  
Postfach 32 68  
D-32076 Bad Salzuflen  
Max-Planck-Straße 33 - 45  
D-32107 Bad Salzuflen  
Tel. +49 5222 924-0  
Fax +49 5222 21009  
[www.dorma.com](http://www.dorma.com)



# ARCOS<sup>®</sup>

## Universal Studio Office

Unique design with  
in-built system versatility



## A fitting harmony for ideas in glass

Wherever glazing and its hardware need to merge into a single entity, our new ARCOS product line offers the ideal transition.

Offering gentle lines with a flowing design, this range of fixings, fittings and furniture provides the perfect blend between the two primary materials. Metal and glass appear to combine seamlessly – with the arc-like curvature of the ARCOS range characterising all the hardware in the programme. Inside and out. With its extensive experience in the materials involved and the associated manufacturing techniques, DORMA has all the production capabilities required to apply this sophisticated capping

geometry. And the ARCOS system has already been singled out for the red dot award 2001 conferred by Design Zentrum NRW in Germany.

With the corresponding fittings from DORMA-Glas, it is possible to create in this style all the standard types of toughened glass assemblies and interior glass doors. Single and double doors can be readily fabricated using this system, and matched with glass side panels and overpanels for that integral look. Lock-handle combinations ensure maximum convenience and security. The ARCOS design offers integration on internal door lock fittings of both lever handles for followers

and lever handles with roses. The elements are “sunken” in the capping for perfect streamlining. Door rails for heavy or high-usage doors complement the portfolio.

All the fittings are of modular design and essentially comprise the basic units, functional inserts and clip-on covers in a variety of surface finishes. The requisite glass apertures and drilled holes correspond to the standard requirements and can thus be provided quickly and without problem.

High-quality materials and excellent workmanship ensure a long service lifetime combined with a truly attractive appearance.





**Contents:**

Page 4 to 7  
ARCOS Universal

Page 8 to 11  
ARCOS Studio

Page 12 to 15  
ARCOS Office

Page 16 to 17  
Service and Support

Page 18 to 19  
Surface finishes

Page 19 can be folded out  
to provide you with all the  
surface finishes available for  
selection at a glance.

## ARCOS Universal

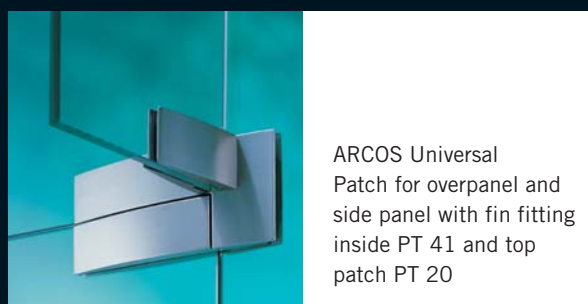
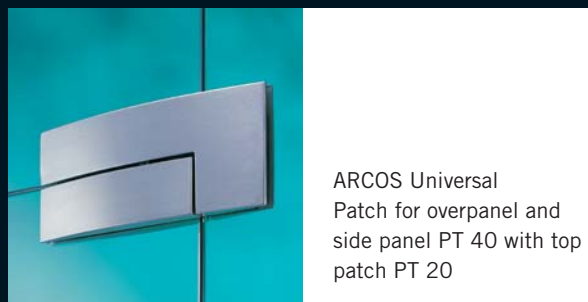
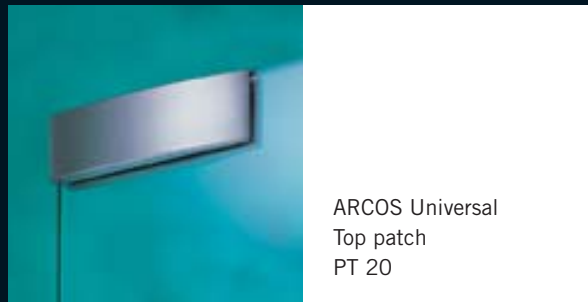
### **Versatility plus multiplicity.**

### **Unlimited scope.**

Patch fittings and connector hardware for overpanels and side panels, fin fittings for particularly large systems – with the curved arc motif of the ARCOS design always incorporated in each component. Gentle reflections that change with the planes give both the glass and its fittings the appearance of a harmonious whole. ARCOS Universal is flexible in its application – for a glass thickness of 10 mm in the standard version plus glazing of 8 or 12 mm thickness if required. The pivot point can be set at either 55 or 65 mm.

Door weights can be anything up to 80 kg, with widths up to max. 1100 mm. The illustrations show just a few examples from the comprehensive ARCOS Universal collection – products offering 24 possible standard combinations for toughened glass assemblies. The innovative clip-on technique incorporated in the hardware ensures that the cover caps can be secured to the basic components so that the fixing is virtually invisible.





Fold out page 19 to make your  
selection of surface finish.





## ARCOS Universal

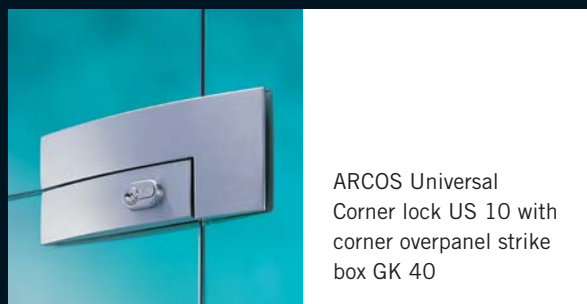
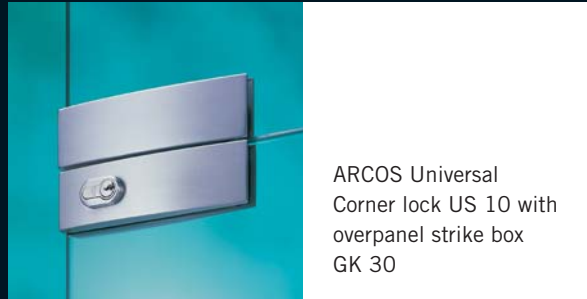
### **Fascinating functionality.**

Experience that counts: DORMA-Glas meets every challenge with the right solution. Versatile and proven lock variants are provided in line with every security requirement, offering convincingly smooth operation for that feeling of confidence. Precision down to the last detail: The lock fittings comply with DIN 18251, Class 3, in relation to their type approval testing – 50,000 operating cycles of the locking bolt.

Furthermore the lock was tested successfully by a neutral testing institute with 100,000 locking bolt operating cycles.

They also offer outstanding corrosion resistance in line with DIN EN 1670, Class 4.





Fold out page 19 to make your  
selection of surface finish.



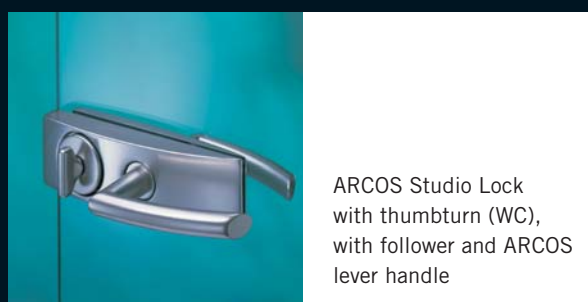
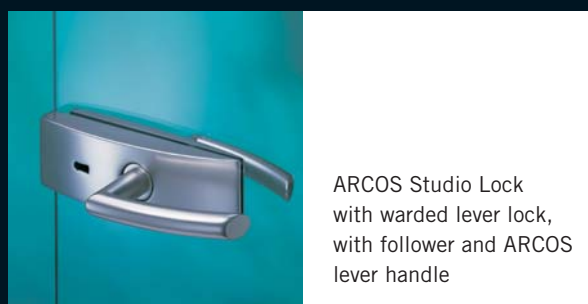
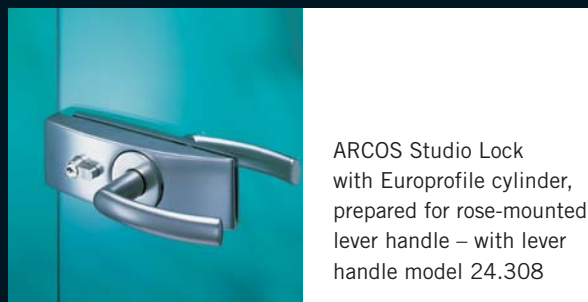
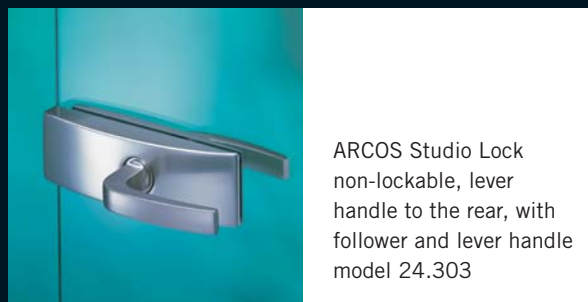
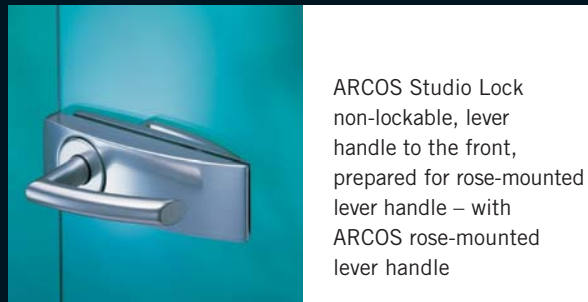
## ARCOS Studio

### **Accent on the attractive.**

The epitome of elegance: ARCOS Studio emphasises the abundance and generosity of the glass surface. Each door fitting and each hinge underlines the value of transparency in interior architecture.

With various surface finishes and lever handle types, the system is able to harmonise with both design-oriented and functional environments.





Fold out page 19 to make your  
selection of surface finish.

## ARCOS Studio

### **A rich selection of designer hardware.**

ARCOS Studio adorns glazed doors of 8 or 10 mm thickness with a standard frame rebate depth of 24 mm (for 8 mm glass thickness) and 26 mm (for 10 mm glass thickness). Solutions involving a frame rebate of up to 40 mm can also be implemented with the aid of appropriately sized packing elements. The wide-ranging combinations of lock functions, surface finishes and lever handle models is particularly impressive.

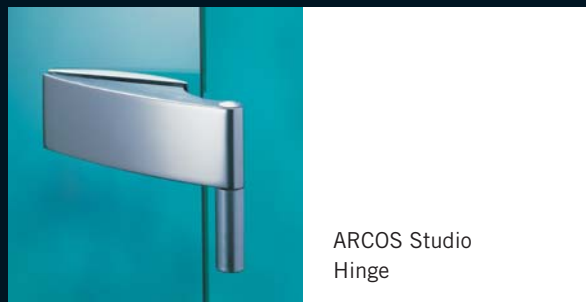
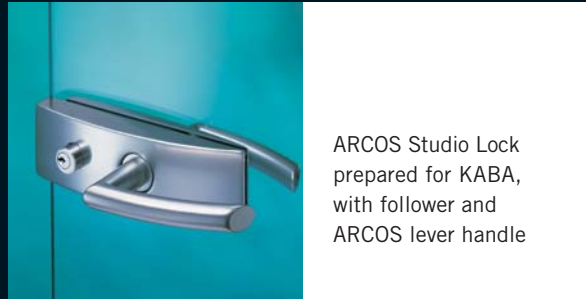
Three different lever handle types can be installed with roses or followers – and located either to the front or

to the rear in the case of non-lockable lock fittings.

And there is also plenty of choice of lockable lock models: with warded lever lock, Europrofile cylinder or Swiss standard 22 mm round cylinder.

The illustrations just show a small selection of the many combinations that are possible. All these lock fittings comply with DIN 18251, Class 3, in relation to their type testing – 200,000 operating cycles of the latch function and 50,000 operating cycles of the locking bolt.





Fold out page 19 to make your  
selection of surface finish.





## ARCOS Office

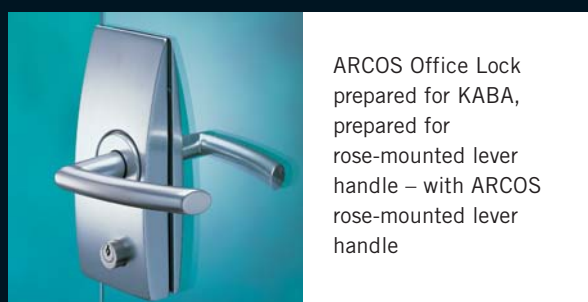
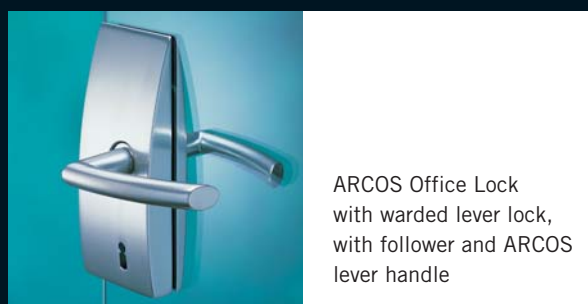
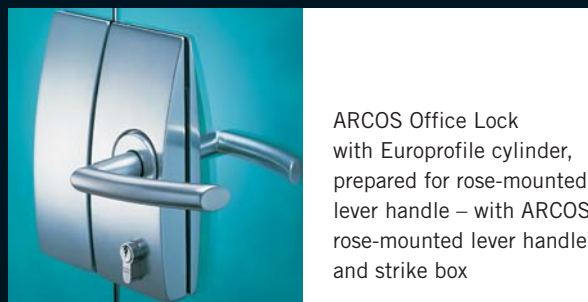
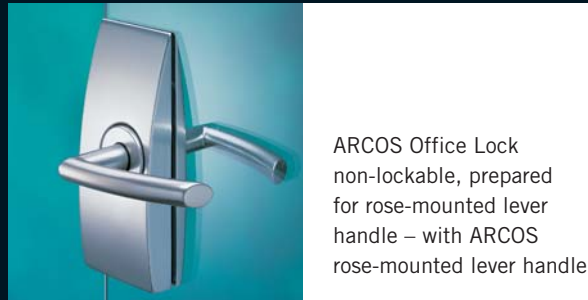
### **Heavy-duty elegance.**

Reliable: ARCOS Office glass door fittings are able to withstand heavy usage. Day in, day out.

Whether non-lockable or prepared for Europrofile cylinders – DORMA's Office fittings have a long and successful track record, particularly in the project sector. ARCOS combines proven functionality with aesthetic elegance.







Fold out page 19 to make your  
selection of surface finish.



## ARCOS Office

### **Prestigious in all its variants.**

ARCOS Office is designed for glass thicknesses of 8 or 10 mm and a frame rebate depth of 24 mm (for 8 mm glass thickness) and 26 mm (for 10 mm glass thickness). There is a selection of various hinge types and lever handle designs with or without rose. And a lever handle specially designed for the ARCOS range completes the integrated design concept. It repeats the radius of the fitting for perfect styling harmony. Standard types of fittings in the materials and surface finishes indicated are available from stock.

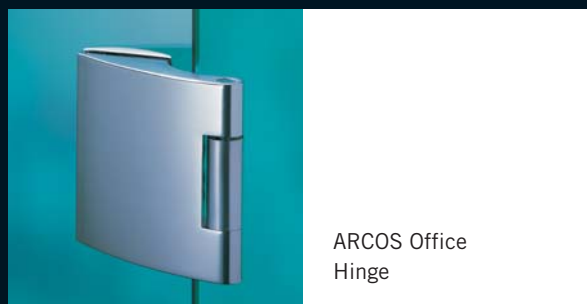
Special finishes with anodised colours and other coatings can also be quickly provided on request.

Most of these lock fittings comply with DIN 18251, Class 3, in relation to their type approval testing – 200,000 operating cycles of the latch function and 50,000 operating cycles of the locking bolt.

Furthermore the lock was tested successfully by a neutral testing institute with 500,000 latch and 100,000 locking bolt operating cycles.

Remark from DIN 18251, Class 3: "The locks are recommended for private entry doors and public buildings (so called project locks)."





Fold out page 19 to make your  
selection of surface finish.



## Support...

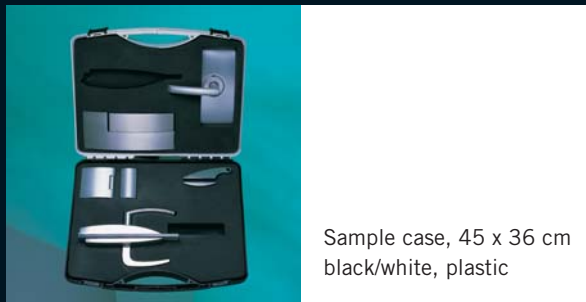
... and the desire to accommodate customer requirements are naturally integral to the DORMA-Glas philosophy. So if a room is designed in glass with timber doors, the ARCOS range must also offer a corresponding lever handle – one specifically created for timber doors.

Effective presentation aids can also be supplied. They both demonstrate and reflect the high level of sophistication of the ARCOS range. Various table displays, a fan-type colour and surface finish selector plus two different sample cases are available.

Particularly suitable for showcases and presentation areas is the high-quality alder wood sample case. It measures 66 x 50 cm and sits on an intricately designed black stand.

The technical brochure contains detailed functional descriptions and dimensional data relating to all the models and variants of the ARCOS range.





Sample case, 45 x 36 cm  
black/white, plastic

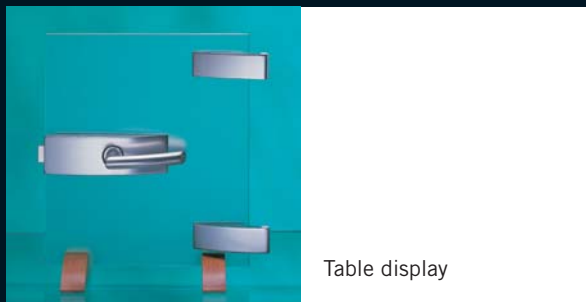
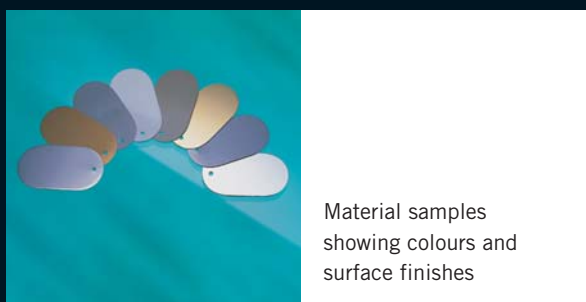


Table display



Material samples  
showing colours and  
surface finishes



## Surface finishes

**Simply fold out and read off your colour selection.**

The ARCOS product range is available in a wide range of surface finishes. The availability of the various colours for the different ARCOS models is indicated on this fold-out page by the arrows on the relevant product pages.

<sup>1)</sup> Availability of these surface finishes on request

The printed colours indicating the surface finishes are not 100 % true, but do provide a useful guide.





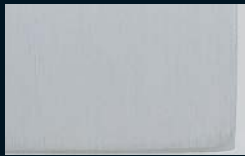
103  
aluminium silver brilliant



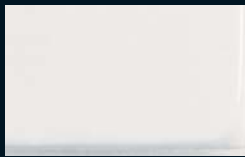
105  
aluminium brass-coloured  
EV3



107  
aluminium similar to satin  
stainless steel



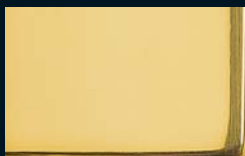
114  
aluminium silver anodised  
EV1 deko



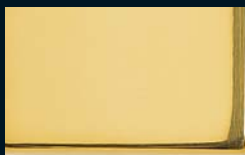
300  
aluminium white powder-coated  
RAL 9016



501  
brass polished chromed



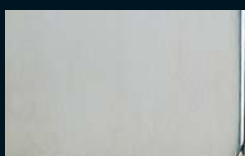
502  
brass polished varnished



503  
brass polished



700  
satin stainless steel



701  
polished stainless steel

<sup>1)</sup> Special colour coatings, special  
anodised finishes

>

>

>

>

>

>

>

>

>

>

Glasbeschlagtechnik  
Glass fittings and accessories  
DORMA-Glas GmbH  
Postfach 32 68  
D-32076 Bad Salzuflen  
Max-Planck-Straße 33 - 45  
D-32107 Bad Salzuflen  
Tel. +49 5222 924-0  
Fax +49 5222 21009  
[www.dorma-glas.com](http://www.dorma-glas.com)